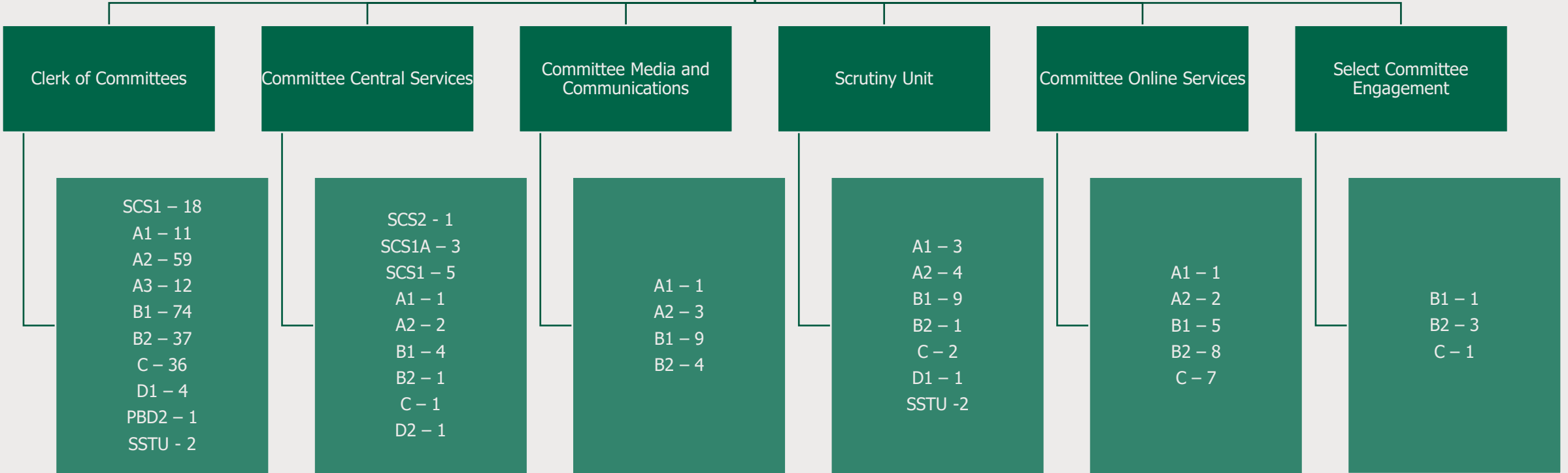


Select Committee Team

Managing Director of the Select Committee Team
SCS2
(Colin Lee)



Key	SCS3	SCS1	A1	A2	A3	B1	B2	C	D1
	£104,000 - £141,227	£75,953 - £95,964	£63,716 - £75,953	£50,870 - £62,643	£27,775 - £39,895	£37,510 - £43,361	£30,985 - £36,532	£26,715 - £30,370	£23,443 - £26,752

SCS3, 2, 1A, 1 are Senior Commons Structure pay bands.
Pay Bands A to D broadly read across to Civil Service grades 6 to Administrative Assistant.