



**Policy engagement for
Researchers – Government in
contrast to Parliament**



Parliament and Government

Engaging with Government Office for Science

Guilia Cuccato, Head of Science Capability, Advice and Leadership

Catherine Leech, Policy Advisor in Academic Engagement

Engaging with the Open Innovation Team

Olivia O'Sullivan, Senior Policy Adviser

Engaging with the Ministry of Justice

Amy Summerfield, Head of Evidence and Partnerships

Engaging with UK Parliament

Parliament ≠ Government

UK Parliament



- Commons, Lords and Monarch
- Holds Government to account
- Makes laws
- Enables the Government to raise and spend money

UK Government



- Some MPs and some Peers, chosen by the Prime Minister
- Runs Government departments and public services
- Is accountable to Parliament



Government
Office for Science

Policy Engagement for Researchers - how to engage with Government

A Quick Guide to working with Government
from the Government Office for Science

19th May 2021

Overview



Government Office for Science

1. Who we are
2. What we do
3. How you can get involved
4. Top tips for working with government

SECTION 1

Government Office for Science – Who we are

Government Office for Science

- Giving scientific advice to the Prime Minister and members of the Cabinet
- Ensuring and improving the quality and use of scientific evidence and advice in government
- Providing the best scientific advice in the case of emergencies, through the Scientific Advisory Group for Emergencies (SAGE)
- Helping the independent Council for Science and Technology provide high level advice to the Prime Minister
- Supporting strategic long-term thinking in government through Futures and Foresight



GO-Science Teams

GO-Science supports the GCSA in ensuring that government has access to the best scientific evidence to inform policies and decisions, and the correct resources and infrastructure for implementing science.

The six directorates within GO-Science are comprised of teams that focus on different aspects of government activity.

Government Chief Scientific Adviser – Sir Patrick Vallance		
Science Systems & Capability	Futures, Emerging Technology & Projects	Covid-19 Advice & Evidence
Global Issues & Opportunities	Security, Resilience & Strategy	Covid-19 Strategy & Delivery

SECTION 2

Government Office for Science – What we do

GO-Science Teams

TEAM	WORK	WAYS TO GET INVOLVED
Futures, Emerging Technology & Projects	<p>The Futures and Innovation teams look for opportunities where emerging science can be used to inform policy.</p>	<p>Foresight project teams work with government departments, experts and academics to research emerging science. The Horizon Scanning Programme Team meet quarterly to identify potential opportunities and threats.</p>
Security, Resilience & Strategy	<p>The Security and Resilience team gather evidence to prepare for emerging risks to support national security.</p>	<p>The Scientific Advisory Group for Emergencies (SAGE) provides scientific and technical advice to support government decision makers during emergencies.</p>
Science Systems & Capability	<p>The Science Systems & Capability Team support the Chief Scientific Advisers and Science and Engineering Profession across Government.</p>	<p>Departments publish Areas of Research Interest as a statement of their research priorities. You can find details of “Evidence gaps and knowledge exchange opportunities” as a result of the Rebuilding a Resilient Britain programme.</p>

GO-Science Secretariat

Chief Scientific Advisor (CSA) Network

Departmental CSAs are responsible for delivering robust, relevant, and high quality science and engineering evidence and advice, ensuring mechanisms are in place so that policy making is underpinned by science and engineering. The CSA Network meets weekly to hear from external experts, share updates on current work and good practice, and maximise collective expertise to resolve cross departmental problems.

Scientific Advisory Group for Emergencies (SAGE)

SAGE brings together scientific and technical experts to ensure coordinated and consistent scientific advice informs the central government response to emergencies. Attendance at SAGE depends on the nature of the emergency and typically includes experts from within government and from academia and industry.

Council for Science and Technology (CST)

The CST is an expert committee that advises the Prime Minister on science and technology policy issues across government. The council is comprised of an independent chair, the GCSA as co-chair, and a further 19 independent members. The council meets quarterly and provides advice on opportunities and risks presented by science, technology and disruptive innovation to direct what the government's high-level priorities for science and technology should be.

Chairs of Science Advisory Councils (CSACs)

The GCSA chairs biannual meetings for CSACs to discuss common interests and share best practice, these meetings also allow CSACs to identify emerging opportunities and challenges for science across government. CSACs are responsible for building networks, using horizon scanning to inform strategy, systems thinking and building the GSE profession.

SECTION 2

Areas of Research Interest – Case Study

Areas of Research Interest

WHAT

- ARIs are documents that set out the most important research questions facing each department.
- They offer a strategic approach to departmental research and development programmes
- Co-developed by departmental CSAs, HoPPs and Analysts
- Refreshed annually

WHY

- Communicate research gaps
- Align scientific and research evidence from academia with policy development and decision-making
- Access a wide range of suppliers
- Engage with researchers
- Access stronger policy evidence bases
- Share research commissions

WHO An Example of collaborators:



ARIs: Rebuilding a Resilient Britain



1. Vulnerable Communities

[Dr LÍgia Texeira](#)

Chief Executive of the Centre for Homelessness Impact



2. Supporting Services

[Professor Steve Martin](#)

Director of the Wales Centre for Public Policy



3. Trust in Public Institutions

[Professor Jo Chataway](#)

Head of Department of Science, Technology, Engineering & Public Policy, UCL



4. Crime Prevention

[Professor Paul Taylor](#)

Director of the Centre for Research and Evidence on Security Threats



5. Supporting Lower Carbon Economies

[Professor Graeme Reid](#)

Chair of Science and Research Policy, UCL



6. Land Use

[Professor Guy Poppy](#)

Professor of Ecology in Biological Science, University of Southampton



[Rachel Tuffin](#)

Director of Knowledge & Innovation, College of Policing



[Louise Shaxson](#)

Director of the Digital Societies programme at ODI



7. Future of Work

[Professor Sarah Vickerstaff](#)

Professor of Work and Employment, University of Kent



8. Local and National Growth

[Meg Kaufmann](#)

Head of Outreach for the What Works Centre for Local Economic Growth



9. Trade and Aid

[Dr Mike Short](#)

CSA for DIT

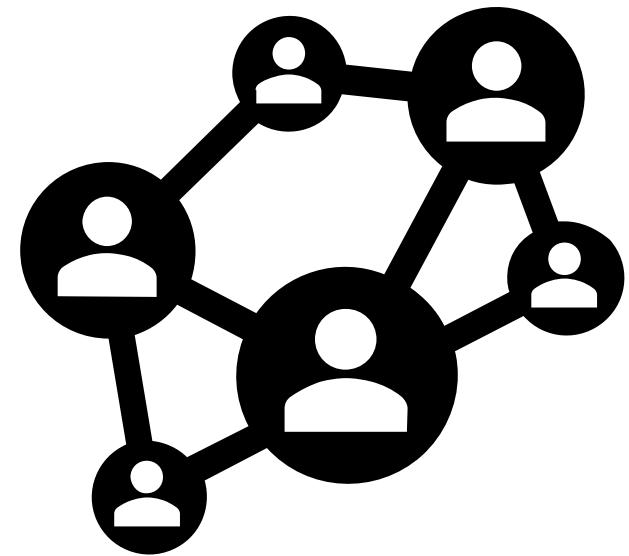
SECTION 2

Government Office for Science – What we do well

Investigation

To build on the work of the ARIs I have carried out interviews to identify the different routes our teams engage with academics. This includes:

- Foresight and Futures projects
- Heads of Horizon Scanning network
- SAGE evidence coordination
- Internships and Secondments
- CSA network meetings



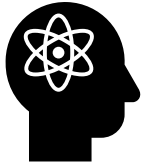
What Works Well



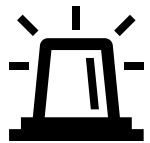
Areas of Research Interest – using departmental ARIs to start conversations between academics and Government.



Horizon Scanning – a network of over 200 people who contribute to identifying future opportunities and threats to respond to.



Knowledge Brokering – joining up members of academia with relevant working groups via National Academies.



SAGE – identifying experts for rapid response in the face of emergencies.

Areas we hope to improve



Growing in diversity - reaching out beyond our established contacts to hear from those who don't always get chance to contribute.



Internal training – for our colleagues to overcome bias and fear of risk to identify contributors from underrepresented areas and emerging industries.



External training – to prepare members of academia for working with Government and providing relevant evidence at pace.



Recognition and reward – pressing for official recognition for academic contributions to policy and government opportunities.

SECTION 3

Government Office for Science – Work with us

Routes of Engagement

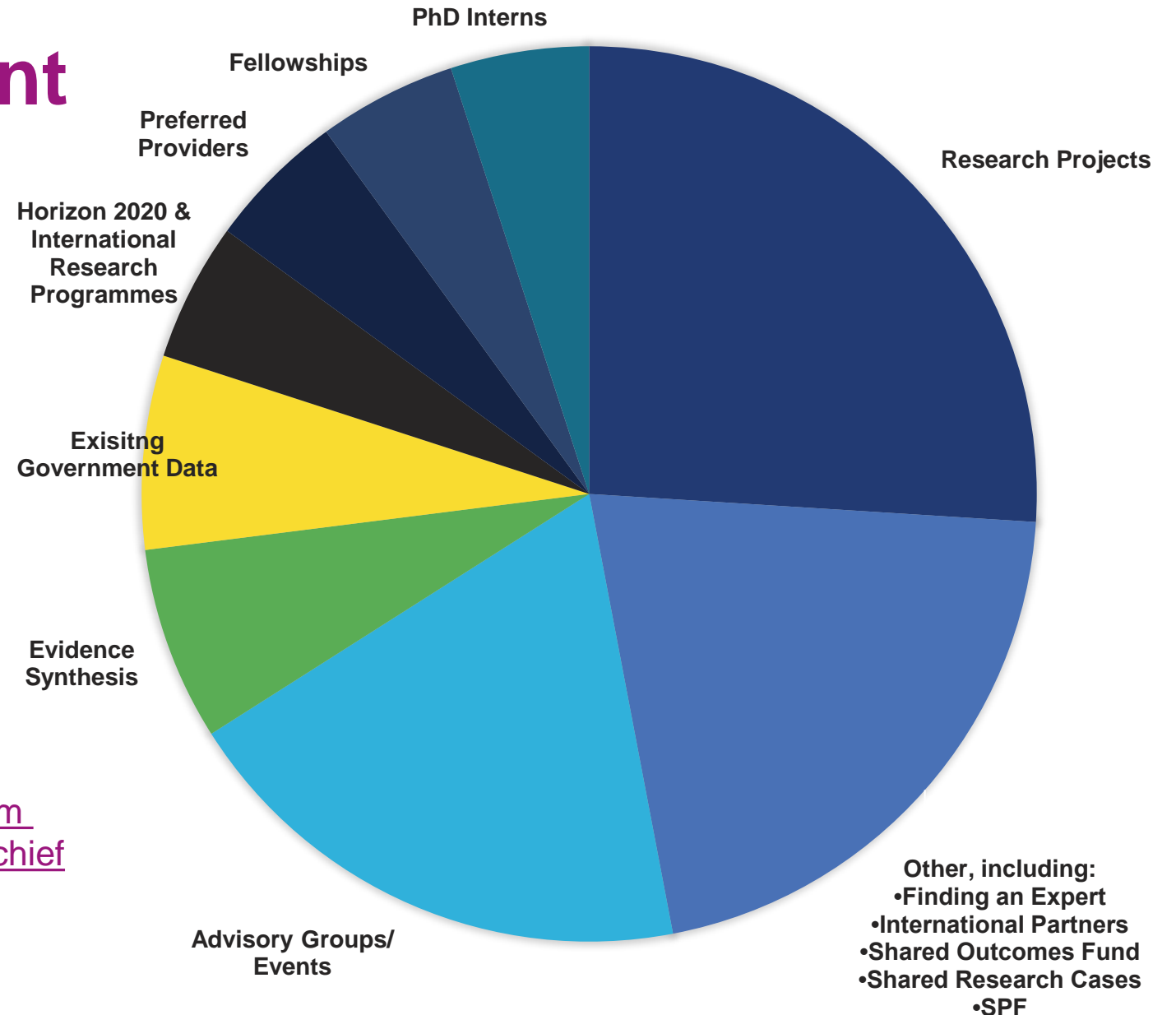
This chart shows the main mechanisms by which Government departments engage with academia.

Other routes include:

- Secondments
- Scoping and briefing groups
- Citizen Science
- Other Government research resources

To find about opportunities you can:

- Subscribe to a mailing list, e.g. [UPEN](#)
- Read blogs such as the [Open Innovation Team](#)
- Follow GOS activities on Twitter [@uksciencechief](#)



Opportunities & Contacts

- **Areas of Research Interest** – to find out more about the research gaps that departments are focusing on and how you can get involved - ari.comment@go-science.gov.uk
- **Futures, Foresight and Horizon Scanning** – to join the Horizon Scanning Network or to offer research in emerging science and technology - futures@go-science.gov.uk
- **Chief Scientific Advisers Network** - to engage with the CSA network- CSAnetworks@go-science.gov.uk
- **Internships and Secondments** – to learn about the latest opportunities for working with GOS – <https://www.gov.uk/government/organisations/government-office-for-science/about/recruitment>
- **Council for Science & Technology** – to learn about the work of the Council for Science and Technology - cstinfo@go-science.gov.uk
- **Science Advisory Council** – to find out about how you can participate in the activities of the Science Advisory Council - science.advisory.council@defra.gov.uk

SECTION 4

Government Office for Science – Top 3 Tips

Top 3 Tips*

- 1. Find connections** - Join the mailing list of a key knowledge broker, e.g. UPEN, to keep informed of the latest opportunities for working with Government.
 - 2. Make connections** – The path to policy is not linear so if you want to make a difference, get involved in as many different activities as possible to get your research heard and build a strong network of contacts.
 - 3. Stay connected** – Don't be discouraged if you feel you're not making an immediate impact, it can take many years to see a difference but stay involved.
- * Don't discount the contribution you can make whatever stage you are at in your career, Government needs to hear from a range of voices and experience.



Government
Office for Science

Thank you

For further information: Giulia.Cuccato@go-science.gov.uk
Catherine.Leech@go-science.gov.uk



THE OPEN INNOVATION TEAM



The Open Innovation Team (OIT) is a cross-government unit that works with academics and other experts to help generate analysis and ideas for policy.

HOW WE WORK

We provide a consultancy service for our customers, with our work normally falling across three main categories: engagement, analysis and ideas.



Engagement

We organise workshops, seminars, visits, conferences and networking events that bring officials and outside experts together to share insights and ideas.



Analysis

We work with academics and others to research and explain the latest evidence on topics we've been asked to look at, and we provide advice on what this evidence means for policy.



Ideas

We work with leading thinkers to generate, develop and test new ideas that our customers might like to take forward.

KEY STATS

We work across all policy areas, including education, health, growth and digital transformation. The list is growing all the time.

350+

ACADEMICS

355 academics and other experts have contributed to work we've delivered for central government since January 2019.

30

PROJECTS

Since January 2019, we've delivered **30** projects for **12 different** central government customers, including Cabinet Office, Home Office, DfE, DCMS and BEIS.

4.5/5

CUSTOMER FEEDBACK

We gather feedback on all our projects and have an average customer satisfaction score of 4.5 out of 5. See the case studies below for more detail.

HOW WE WORK WITH EXPERTS



COMMON ENGAGEMENT TOOLS



WORKSHOP

Interactive session between academics and policy makers focused on sharing insights and ideas about a policy problem

1-2 months



EXPERT PANEL

Set-up and help manage a panel of the most relevant experts to inform policy thinking.

2 months +



SEMINAR SERIES

A seminar series brings a stream of selected experts to share their insights and ideas with your team.

2 months +

COMMON ANALYTICAL TOOLS



RAPID REVIEW

A short OIT report summarising the views of leading thinkers on a topic.

2-3 weeks



DEEP DIVE

A detailed OIT report summarising the latest evidence on a topic and explaining what this means for policy.

2-3 months



APPLIED RESEARCH

A research collaboration between officials and academics to address an agreed policy question e.g. an evaluation or proof of concept for a technology solution.

3 months +



THINK PIECE

A short note written by a top expert with OIT support.

1 month

NATIONAL LEADERSHIP CENTRE

The National Leadership Centre (NLC) commissioned us to lead a programme of academic engagement around public service leadership.



Problem

NLC needed a better handle on the evidence about leadership to shape its work. It also wanted to build a network of academics to help it become a hub for leadership expertise.



Our Work

We mapped a network of 60 UK experts on leadership, organised four workshops around the country, commissioned a set of 17 accessible articles, and filmed a set of videos.



Outcome

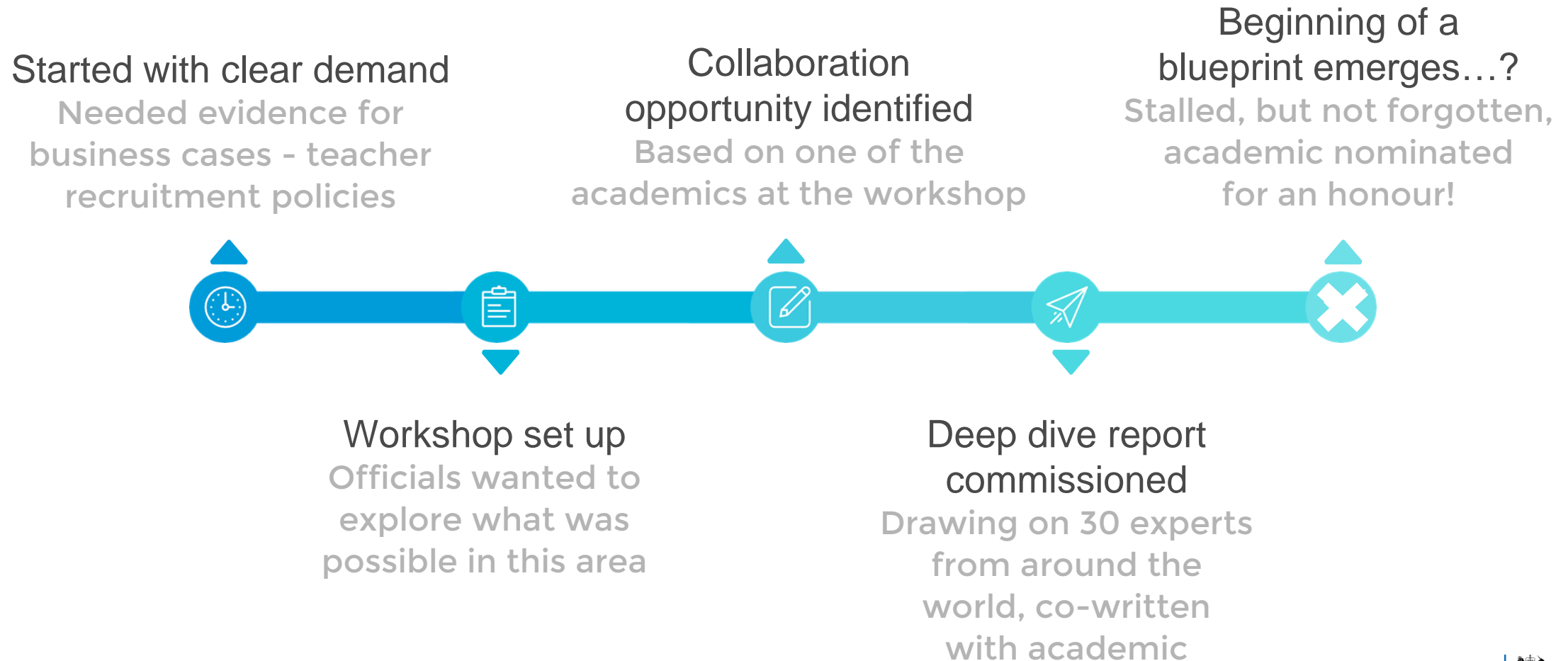
Our work has helped NLC build links with academics, develop its research strategy, and shape thinking on leadership development.



National Leadership Centre
(NLC) workshops
Feb-Mar 2020



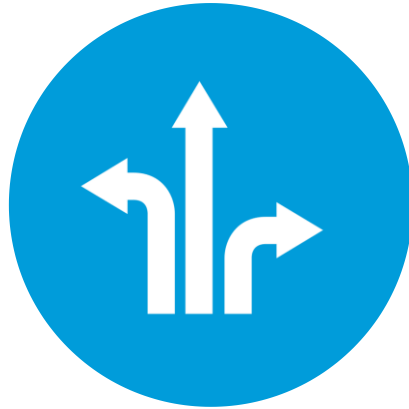
CASE STUDY: TEACHER RECRUITMENT



WORKING WITH US



3 GROUND RULES FOR INFLUENCING GOVERNMENT



**Pursue multiple
routes**



**Proactively
network**



Be a guide

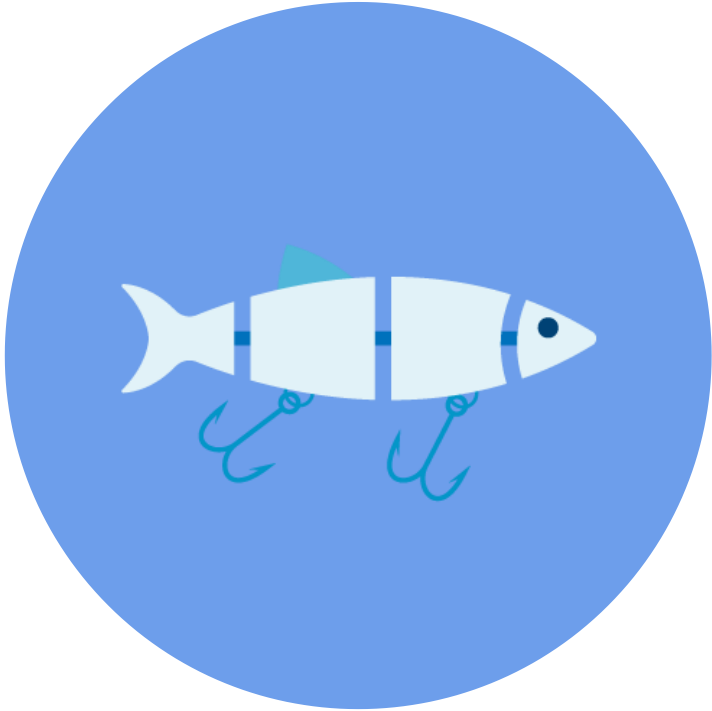
SUPPLY-LED STRATEGY



Cast your net wide



Have a hook



Use a lure

DEMAND-LED STRATEGY



Easy to find



Credible



Flexible

SOME QUICK PRACTICAL STEPS

1. **Email alerts** for policy papers and consultations on Gov.uk
2. **Sign up for a Westminster briefing email** e.g. Politico's
3. Find out if there is an **expert database or advisory panel**
4. **Team up** and monitor an issue together
5. Check **UPEN emails for our call-outs for experts**

And finally....

Say hello!



CONTACT US

e enquiries@openinnovation.gov.uk

t [@openinnovteam](#)

ln [linkedin.com/company/open-innovation-team](https://www.linkedin.com/company/open-innovation-team)



Ministry
of Justice

Policy Engagement for Researchers: how to engage with Government

**Amy Summerfield, Evidence and Partnerships Hub,
Data and Analytical Services Directorate (DASD)**

May 2021





The Ministry of Justice (MoJ)

Data, analysis and research in MoJ

The Evidence and Partnerships Hub

Engaging with us

The Ministry of Justice

The Ministry of Justice (MoJ) is a major government department, working to protect and advance the principles of justice and deliver a world-class justice system that works for everyone.

Significant, wide-ranging responsibilities across England and Wales, with implications for some of the most vulnerable people in society.

Courts, prisons, probation services, protecting the public, reducing reoffending, children and families, youth justice, legal aid, and much more.

A ministerial department, led by Lord Chancellor and Secretary of State for Justice, the Rt Hon Robert Buckland QC MP, and his ministerial team.

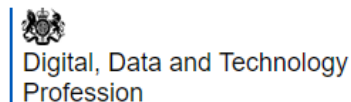
Supported by 34 agencies and public bodies.

The Data and Analytical Services Directorate (DASD)

The Data and Analytical Services Directorate (DASD) is at the heart of the MoJ.

The DASD vision is to generate greater evidence and insights that drive improvements across the justice system to really change lives.

DASD includes a diverse community of professional analysts from the Government Analytical Professions.



We work with our colleagues in policy, operations, finance and corporate services through the provision, usage, and interrogation of data and evidence to support decision-making.

The Evidence and Partnerships Hub



The Evidence and Partnerships Hub

We need to understand who, why and how people come into contact with our system and what we can do to improve their experiences and outcomes.

We need robust research and analysis – whether that is conducted internally, commissioned, or through external collaboration.

Our vision is to enhance the way data and evidence is used, to shape policy and operational decisions and drive improvements to justice outcomes.

Aims:

- To enhance the use, application and availability of evidence across MoJ's departmental priorities
- To strengthen our strategic research capabilities by collaborating and partnering with academic experts, research networks and research funders to address critical evidence gaps
- Reinforce the impact of evidence at all stages of policy and operational development and evaluation



The Evidence and Partnerships Hub

- Delivering and embedding The Evidence Strategy
- Publication and dissemination of the Areas of Research Interest
- Knowledge and expertise exchange and brokerage
- Events, seminars and workshops
- Maintaining an Academic Network
- Facilitating secondments and fellowships
- Supporting and unlocking funding
- Embedding cultural change in ways of working



The MoJ Areas of Research Interest



The Areas of Research Interest (ARI)

The Areas of Research Interest (ARI) initiative is a cross-government undertaking, promoted and facilitated by the Government Office for Science and Government Chief Scientific Adviser.

Followed the 2015 Nurse Review of UK Research Councils recommendations to achieve:

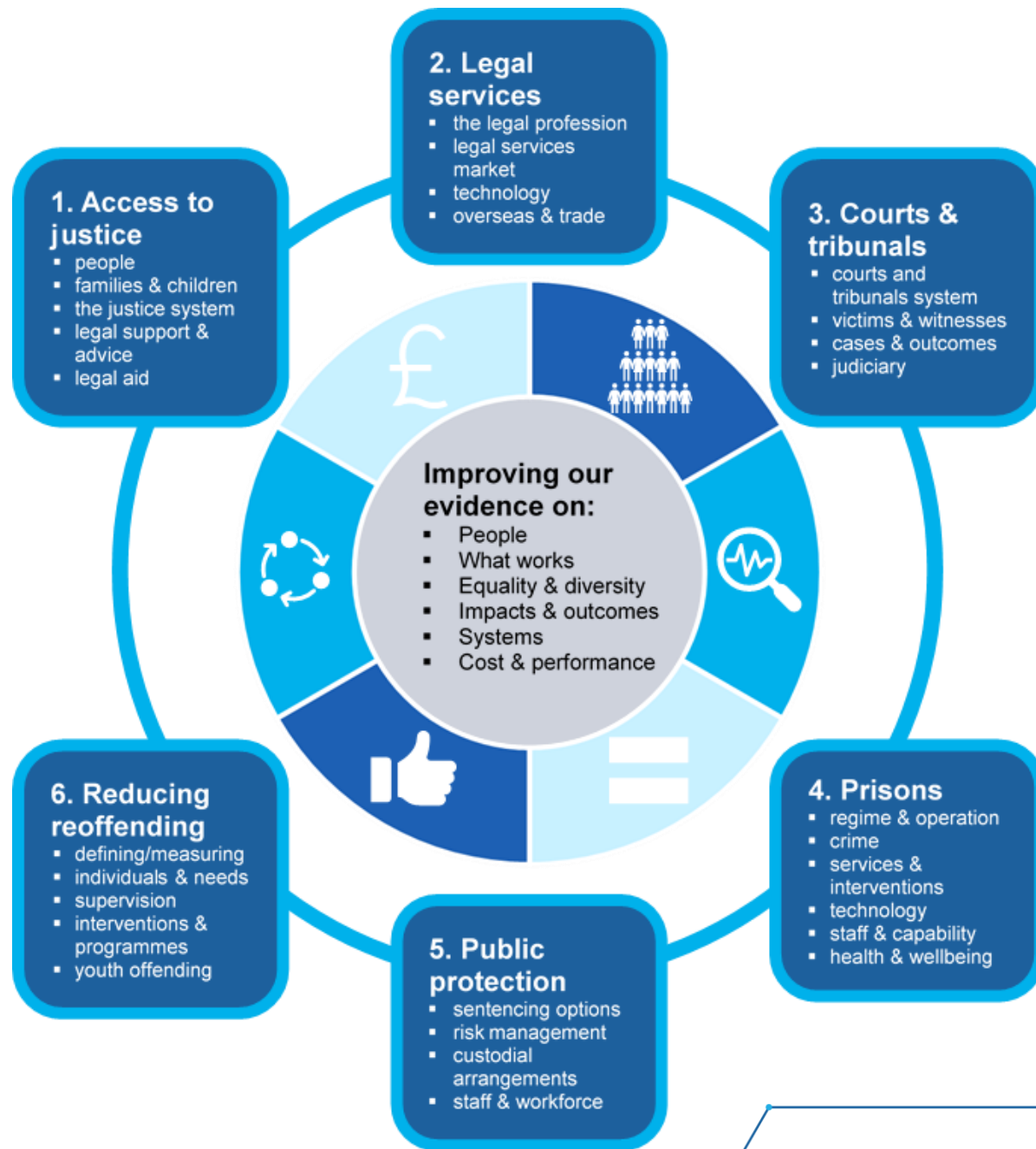
- A more strategic approach to departmental research and development programmes
- A more sophisticated dialogue with academia
- Documents that set out the most important research questions facing each department

Aims to align scientific and research evidence within government policy and operational decision-making.

Highlights key research questions and evidence gaps that could be filled by external research.

MoJ published its first ARI in 2018 and [updated this in December 2020](#) – it can be found on gov.uk along with the ARIs of other government departments.

IMPROVING JUSTICE OUTCOMES



through innovative research, data, and analysis

Academic Network



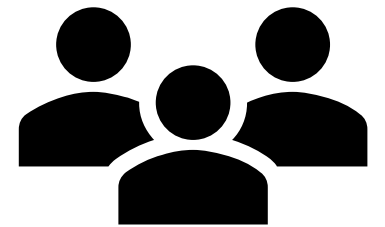
The Academic Network

Making connections and facilitating access to a range of external experts from across a broad spectrum of areas, disciplines, expertise and experience to help address critical evidence gaps outlined in the ARI and maximise the use of evidence across the department.

The Network is a database of academics and research partners who have agreed for their contact details and areas of expertise to be shared within the department and have consented for us to contact them for research needs and potential collaborations.

Join the Network to:

- Share the latest published and emerging evidence with policymakers
- Provide advice for policymakers about the implications of evidence for policy
- Take part in policy roundtables or advisory groups
- Lead or take part in seminars and other events to share ongoing research
- Find out more about potential avenues for co-creation and collaboration



Data First



Data First

Ambitious data-linking programme led by MoJ and funded by ADR UK (Administrative Data Research UK) to unlock the potential of the wealth of data already created by MoJ through linking administrative datasets from across the justice system and beyond.

Linking internal justice datasets can build a picture of the characteristics of justice system users and their interactions with the courts, prisons and probation services. Linking to other government departments is intended to develop our understanding of how justice system users interact with other public services.

Understanding these characteristics, patterns of frequent use, and common transitions between services, can help develop our understanding of ‘what works’ to improve experiences and outcomes and inform the development of policies and services.

The project is designed to facilitate links with our research and academic partners by enabling accredited researchers to access anonymised, research-ready datasets in an ethical and responsible way; and working in collaboration to identify priority areas for analysis to make the best use of the data.



Engaging via Data First

Academic Seminars

We have established a series of seminars with the academic and research community to raise awareness of Data First, identify priority research questions and facilitate use of the data. To register your interest in attending one of these seminars or to find out more about previous events, please email datafirst@justice.gov.uk.

Research Fellowships

In partnership with ADR UK, we have announced a rolling programme of funding calls seeking proposals from Research Fellows to use the newly available data. Two funding calls have been announced so far, inviting research and analysis of the criminal courts data and the MoJ-DfE data. Future opportunities will be announced via [ADR UK's website](#).

Apply for data for research

Accredited researchers can apply to access available datasets for research. More information on how to apply is available in our Data First [user guide](#).

Find out more via our [Data First page on gov.uk](#) and [ADR UK's project page](#).

Opportunities to engage with us



Opportunities to engage with us

Join our Academic Network

To ensure we are engaging with academics and research partners with a broad range of expertise and experience, and to find out about opportunities to work with the department.

To join, contact: researchsupport@justice.gov.uk

Get in touch – share evidence, identify learning and collaborative opportunities and provide us with feedback

We want to connect with researchers to help us address critical evidence gaps in our ARI. Get in touch if you are aware of evidence that might be relevant, are submitting a funding proposal that might generate it, or to identify mutually beneficial projects for collaboration or co-creation.

Take part in Data First via seminars or fellowships

Contact datafirst@justice.gov.uk

Tips for engaging with us

- ✓ **Familiarise yourself with the MoJ Areas of Research Interest (ARI)**
 - Keep up to date with the department's areas of interest and priority evidence gaps.
 - Consider how your research fits within this landscape.
- ✓ **Understand the wider policy context and government ways of working**
 - Demonstrate awareness of the policy and wider societal context of the department
 - Consider your skills as a researcher, the expertise you have, and how this fits with the requirements and demands of a government department
 - Consider the accessibility of your evidence and the real-world implications for policymakers
- ✓ **Make use of existing networks**
 - Join the Universities Policy Engagement Network ([UPEN](#)) to find out about collaborative opportunities
 - Utilise guidance on engaging with government, such as from [UPEN – Blogs](#) and from the [Institute for Government](#)

Universities
Policy
Engagement
Network



Engaging with UK Parliament as a researcher: resources and support

Online resources and 'how to' guides:

www.parliament.uk/research-impact

@UKParl_Research

Dedicated Knowledge Exchange Unit (Sarah, Naomi and Laura):

keu@parliament.uk



Houses of Parliament
Westminster
SW1A 0AA

keu@parliament.uk
+44 (0)20 7219 2840
[@UKParl_Research](https://twitter.com/UKParl_Research)
parliament.uk/research-impact