



HOUSE OF COMMONS



Having a PIP or ESA Assessment

(PIP) Personal Independence Payment
(ESA) Employment and Support Allowance

NOVEMBER 2017						
M	T	W	T	F	S	S
		1	2	3	4	5
6	7	8	9	10	11	12
13	14	15	16	17	18	19
20	21	22	23	24	25	26
27	28	29	30			

Please tell us what you think by
Friday 10th November.



EasyRead version



We are the Work and Pensions Committee at the House of Commons in Parliament.



Parliament has groups or committees to look at things the Government is doing.



They use what they find out to check if things are working well or help change things or make them better.



This committee is looking at how well the **Personal Independence Payment (PIP)** and **Employment and Support Allowance (ESA)** assessments are working.



So we need to hear about how well they are working for you and if they could get any better.



We especially want to hear about:

The people who do the assessments:

1. Do they know enough about the difficulties or health problems people have?

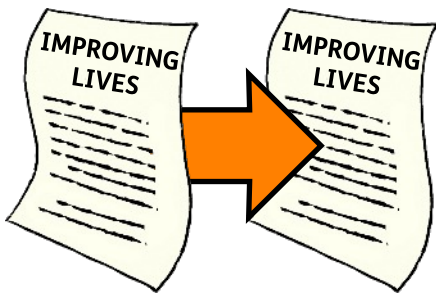


2. They are given this job by the Department for Work and Pensions (DWP).

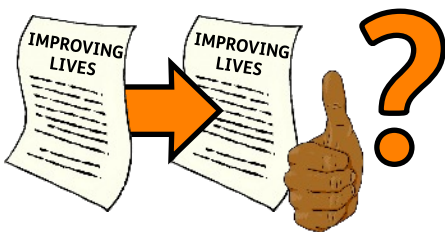
Do the DWP check they can do the job well enough?



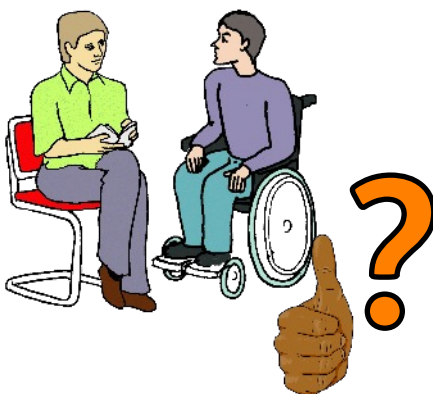
3. The test for ESA is called the **Work Capability Assessment**. This is to see if you can get the benefit or could do some work.



The Government said they might make some changes in their **Improving Lives** green paper.
(<https://www.gov.uk/government/consultations/work-health-and-disability-improving-lives>)



Would these changes be a good idea?



4. Do they do better assessments anywhere else and could we use those for ESA and PIP?



Appeals:

1. Why do so many claimants want to change ESA or PIP decisions?



2. How easy is it to tell the DWP if you are unhappy with a decision?



3. Are there things done in ESA assessments that could be used in PIP assessments?



And the other way around?

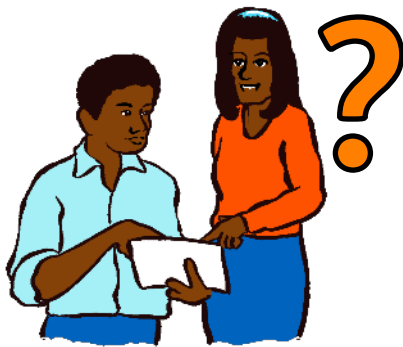


4. What changes could be made to make sure less people want to appeal?



How was it for you:

1. Did you understand what the assessment was for?



2. What help do you need to understand it more?



3. Are some groups of people more likely to have problems with their assessments?



and what can we do about this?



4. Should PIP and ESA assessments work more together?



5. What else could be done to make the assessments better for you?



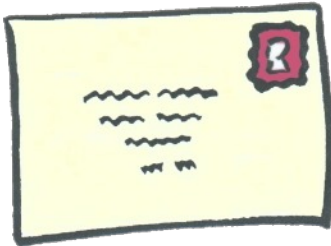
Tell us what you think



You can tell us what you think by going to our web page and following the link there:

<http://tinyurl.com/pipcommittee>

Or post your answers to:



**Work and Pensions Committee
14 Tothill Street
London
SW1H 9NB**

NOVEMBER 2017						
M	T	W	T	F	S	S
		1	2	3	4	5
6	7	8	9	10	11	12
13	14	15	16	17	18	19
20	21	22	23	24	25	26
27	28	29	30			

Please tell us what you think by:

Friday 10th November.

Credits



This paper has been designed and produced by the EasyRead service at Inspired Services Publishing Ltd. Ref ISL142 17. September 2017.

www.inspiredservices.org.uk



It meets the European EasyRead Standard.



The **Making it Easier Group** making EasyRead information with **Leading Lives**.



Artwork includes material from the Inspired EasyRead Collection and cannot be used anywhere else without written permission from Inspired Services.



www.inspired.pics



HOUSE OF COMMONS